

# Shearwater<sup>EM</sup>

A division of Onyx Spectrum Technology, Inc.

Customer Centric Repair, Support and  
Sustainability Solutions for Legacy Products

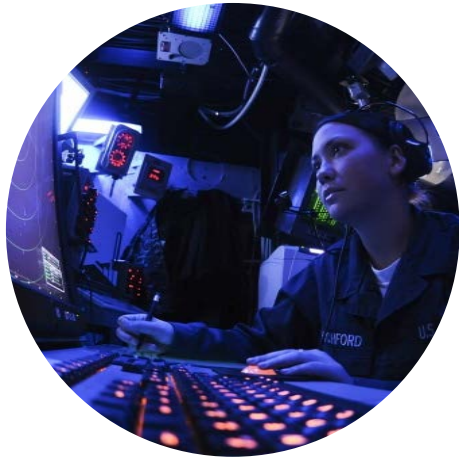
# Overview

**Shearwater**<sup>EM</sup>  
A division of Onyx Spectrum Technology, Inc.

**Customer Centric Repair,  
Support and Sustainability  
Solutions for  
Legacy Products.**

Shearwater EM (SEM) is the Engineering and Manufacturing division of Onyx Spectrum Technology specializing in sustaining engineering and obsolescence management solutions for electronic embedded COTS products and systems. Shearwater EM is available as a solution resource / partner to provide continued service alternatives for end of life and otherwise unsupported components and systems. We have the flexibility to work with OEMs to provide cost effective sustaining solutions. The Shearwater EM division is the OEM and sole source for parts, servicing, repairing and refurbishing of Datacube, Aurora, Ariel and Griffin components. Please contact us for services and product information.

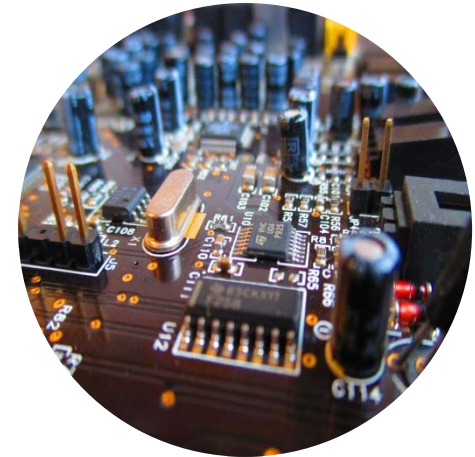
# Markets Served



**Defense**

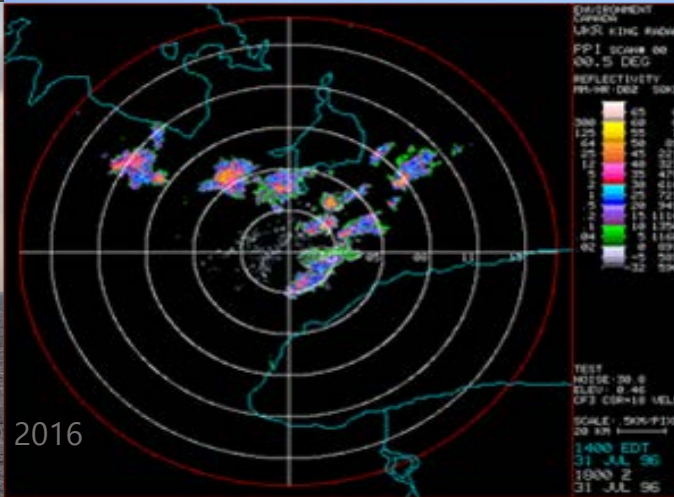


**Government**



**OEMs**

# Partial List of Customers



- Emhart Glass
- Federal Aviation Administration
- ITT Corporation
- L-3 / Kollmorgen Electro-Optical
- Leidos
- Lockheed Martin
- NATO'
- Naval Air Warfare Center
- Naval Inventory Control Point
- Naval surface Warfare Center
- Crane Div. Northrop Grumman Corporation
- UNI Corporation
- US Air Force
- Carlo Gravazzi
- Datacube
- Brooktrout Technology

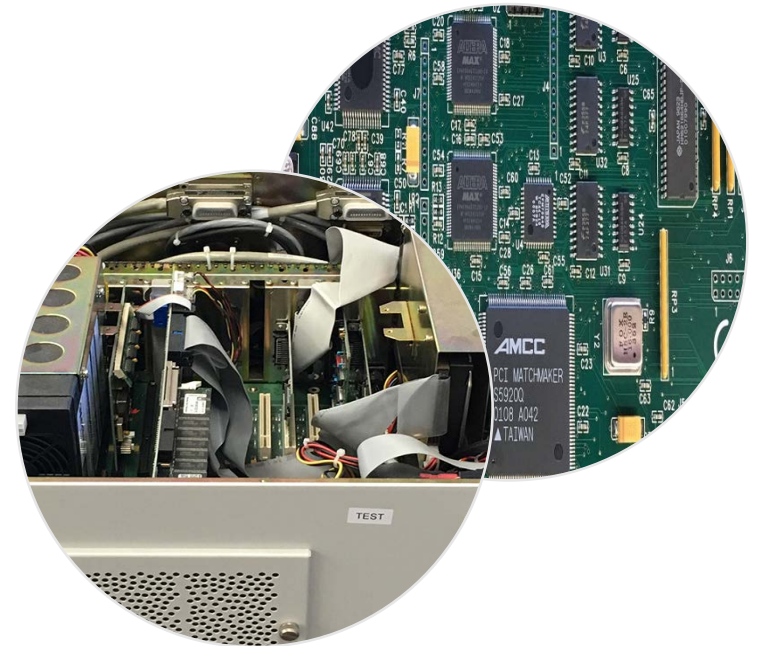
# Services Offered

- Manufacturer of Diminishing Manufacturing Sources and Material Shortage (DMSMS) electronic and electro-optical products
- Prototype builds
- Build to print
- Receiving and inspection
- Test & Evaluation
- Troubleshooting down to the component level
- Repair & Rework
- Full electrical and mechanical assembly
- System integration



# Technical Expertise

- Embedded electronics
- Signal Processing Electronics and Systems
- Electro-Optical Systems
- Communications Systems



# Quality & Compliance

Quality and compliance are at the core of our operations. Our quality program is certified and registered under ISO 9001: 2008 standards, blended with compliant QMS and Good Manufacturing Practice. Our calibration program follows ISO 9001 & Mil-STD-45662A (Calibration System Requirements). Our overall program is certified to comply with the requirements of **ISO 9001: 2008**.



# We Add Value

**T**ransparency

**E**xcellence

**A**ccountability

**M**indfulness



- Founded in 2004, incorporated in Massachusetts
- Team members have received a number of awards and recognition for professional & civic endeavors.
- SBA Emerging 200 Graduate
- HUBZone Certified
- Federal Transportation – DBE Certification
- MA SDO - Certified M/WBE
- Certified MBE – Greater New England & National NMSDC
- Certified Woman Owned Small Business
- ISO 9001 Certification & Registration



# NAICS Codes

## Manufacturing Source & Supply Services

**334111** Electronic Computer Manufacturing

**334118** Other Computer Peripheral Equipment Manufacturing

**334210** Communications Equipment & Telephone Apparatus Manufacturing

**334511** Search, Detection, Navigation, Guidance, Aeronautical and Nautical Systems Manufacturing.

**335999** Other Electrical Equipment and Component Manufacturing

**541330** Engineering Services

**811219** Electronic and Precision Equipment Repair & Maintenance – communications, radar & sonar

# Contact Us

**We look forward to hearing from you!**

[info@shearwater-em.com](mailto:info@shearwater-em.com)

617.407.2826 Corp. Office – Boston, MA

978.686.7000 Manufacturing & Engineering – Lawrence, MA